

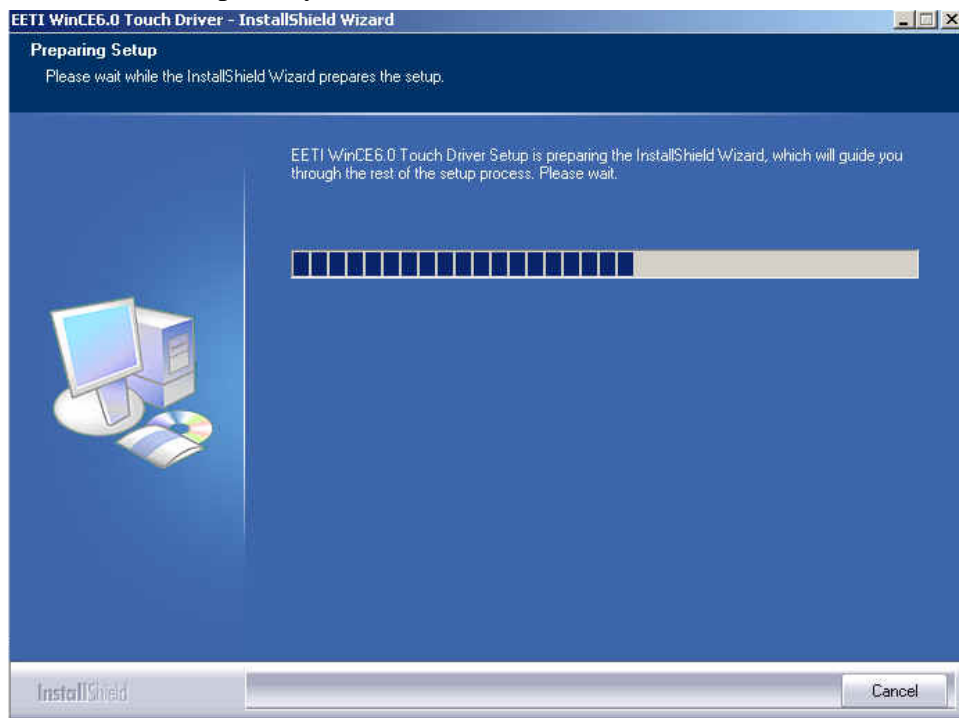
EETI WinCE Touch Driver Installation Guide

Version: 3.0.1.7022

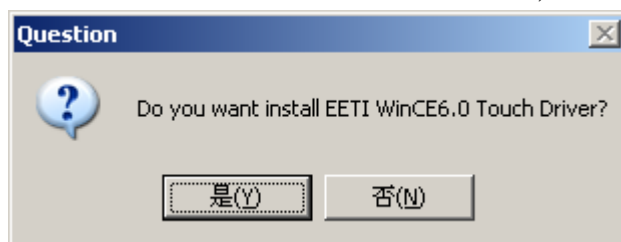
Operation System: Windows CE .6.0

Release Date: 1-5-2006

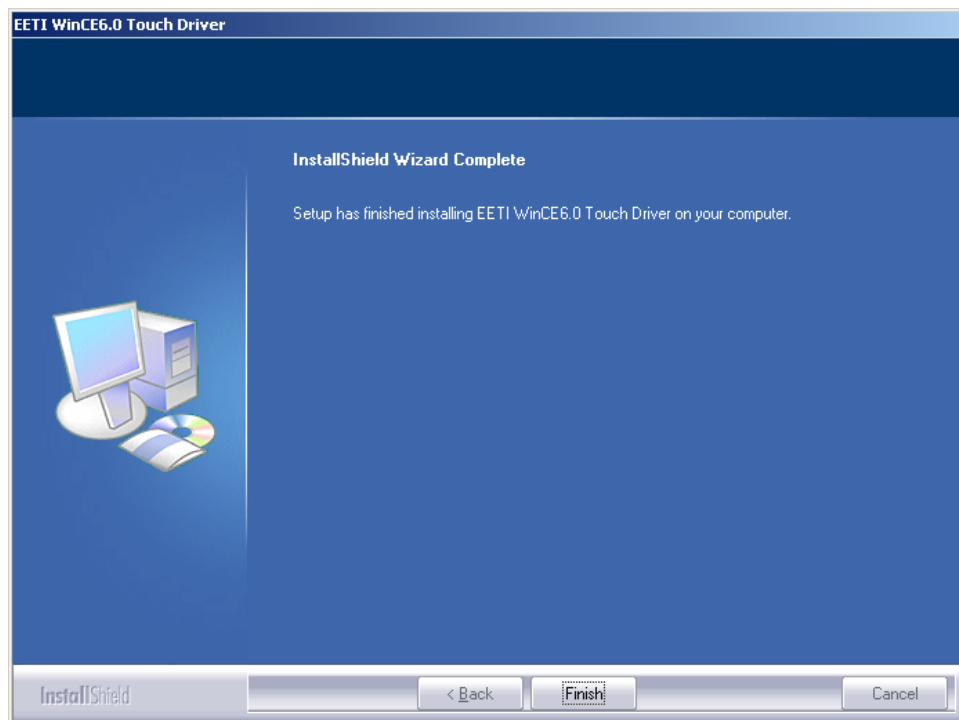
1. Execute setup.exe, you will see the installation window.



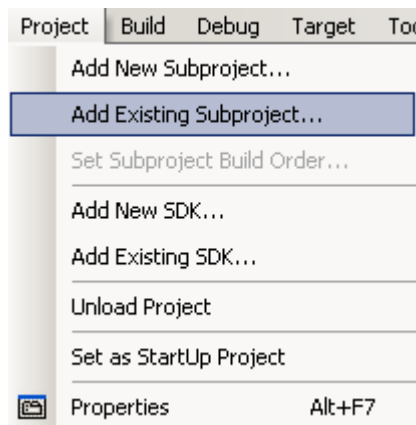
2. Select Yes to continue the installation, or select No to cancel it.



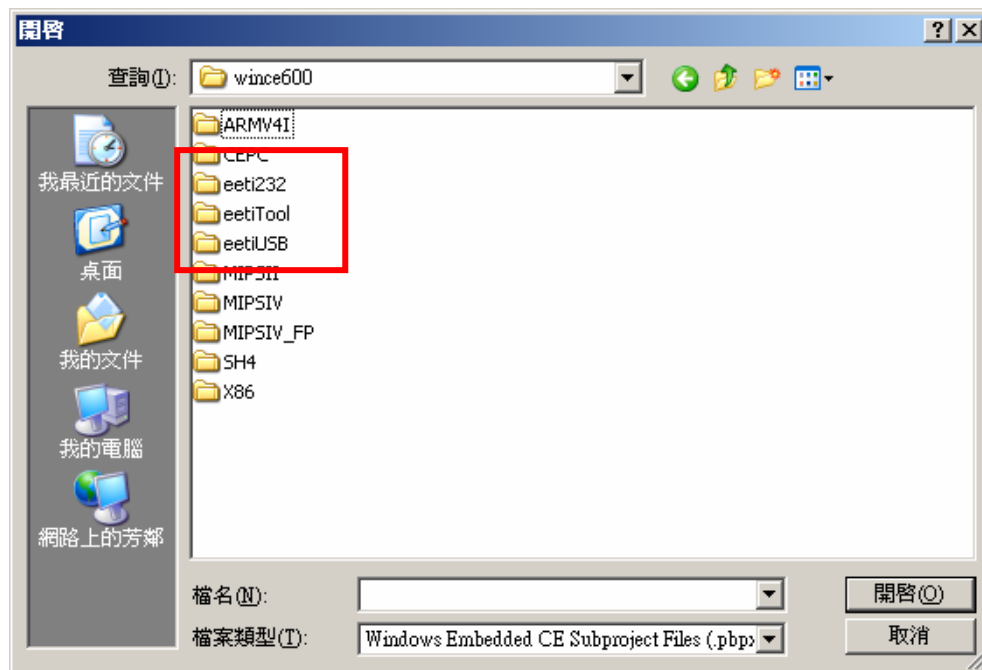
3. When installation successfully finish, you will see the window. Click Finish to close the installation window.



4. Launch Visual Studio 2005 with Platform Builder WinCE6.0. Open your OSDesign which you want to install EETI Touch Driver.
5. Select Project → Add Existing Subproject



6. Switch the folder to C:\EETICEDB\wince600



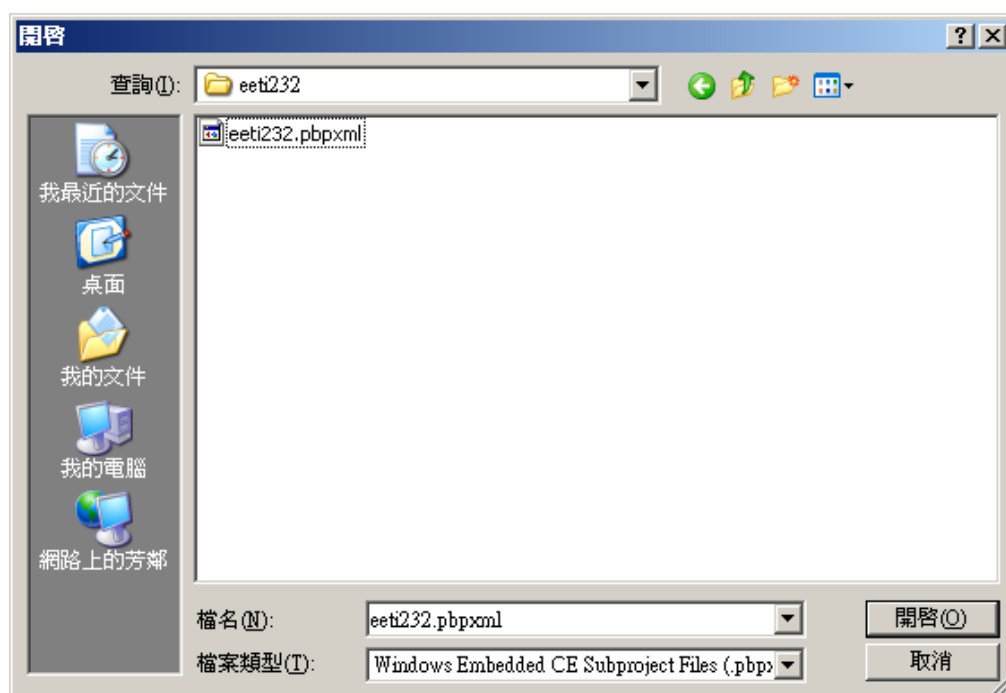
7. To add subprojects into your OSDesign, Choose the pbpxml file under different folder. (i.e. eeti232, eetiTool and eetiUSB)

[For USB Controller]

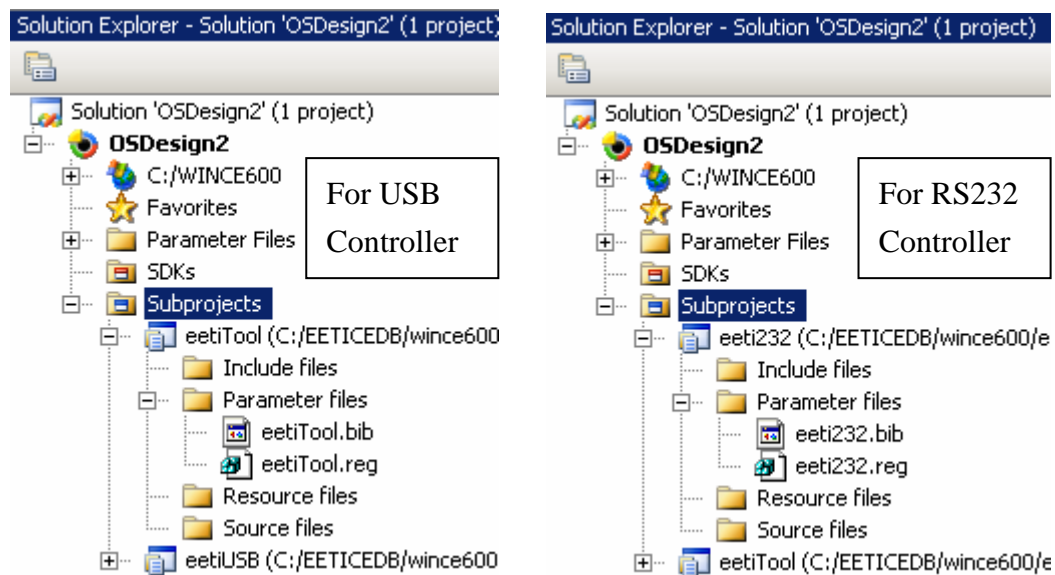
Add **eeti TouchKit** and **eeti USB** subprojects into your OSDesign

[For RS232 Controller]

Add **eeti TouchKit** and **eeti RS232** subprojects into your OSDesign



8. After you add catalog items, you will find the subprojects inside your OSDesign.



9. Select Build → Make Run-Time Image to make the new image.

Notes:

1. You can modify registry setting as described below:

[For TouchKit tool] Modify eetiTool.reg:

[HKEY_LOCAL_MACHINE\Drivers\TouchKit]

"RBSIZE"=dword:800 → set scale that will be treated as the same point
x-coordinate $\text{regin}(\text{pixel}) = (\text{RBSize} / 65535) * \text{x-coordinate resolution}$
set RBSize = 0 can disable right button

"RBTIME"=dword:FFFFFF → set how long the same point pressed will treated as right button. The unit is 10^{-7} second.

"FLAGS"=dword:1 → set 0x1 software filter enable

```
set 0x3000 update eeprom funtion enable
```

set 0x100 to enable the check rotation function

"BeepFrequency"=dword:1F4 → Beep Frequency(x86 only)

"BeepTime"=dword:64 → Beep Times(ms)(x86 only)

"ZFilterThreshold"=dword:800

"ZFilterBound"=dword:00100001

"SoundType"=dword:0 → This is the default sound type.

SoundType = 0 is no sound

SoundType = 1 is Beep in touch down.

SoundType = 2 is Beep in lift off.

"NoPostRange"=dword:80

"SECDisable"=dword:1

[For RS232 Controller] Modify eeti232.reg:

[HKEY_LOCAL_MACHINE\Drivers\BuiltIn\TouchKit1]

"Dll"="TouchKit.dll"

"Order"=dword:00000001

"Prefix"="TKT"

"Index"=dword:00000001

"Context"=dword:1; → This is the COM Port index which you used.

[HKEY_LOCAL_MACHINE\Drivers\BuiltIn\TouchKit2]

"Dll"="TouchKit.dll"

"Order"=dword:00000001

"Prefix"="TKT"

"Index"=dword:00000002

"Context"=dword:2; → This is the COM Port index which you used.

2. [For USB Controller] Select the UHCI or OHCI USB Host Controller driver into your platform which supported by the target device. Check the USB mouse can go well at the same port. Select the "Mouse" into your platform. This can be found in:Catalog Item Window, add “Core OS\CEBASE\Shell and User Interface\User Interface\Mouse”

3. You can uninstall the catalog items in platform builder by execute setup.exe again.